



PORSCHE



Exclusive Boxster

The Ultimate Personalization

Contents

Philosophy	2
Exclusive examples	4
Colors and materials	18
Exclusive options	20
Designing your Porsche	40
Service	41



Philosophy

Exclusivity. Individuality. Craftsmanship. **Concepts which have always been associated with Porsche.**

Porsche Exclusive stands for the individual personalization of your vehicle, direct from the factory. You tell us what you want, and we will do our utmost to give it to you—provided, of course, that it is technically feasible and does not compromise quality.

When customizing a car, it's not enough just to use the best available materials. Our overriding principle has always been to make full use of the traditional skills of our craftsmen, carrying out the work by hand. Our specialists have years of experience in the handcrafting of decorative hardwoods, enabling us to bring out the individual character of these superb materials.

What about Carbon Fiber? Light and extremely durable. Expressing all the excitement of the racetrack. Or stainless steel? Very strong, polished and with a chrome finish—pleasing to the eye, and extremely resistant to heat and corrosion. Or another truly brilliant possibility: highly polished anodized aluminum.

Would you like to upgrade the interior or exterior of your car, or add a PCM package in leather or a sport exhaust system? Your wish is our command.





Exclusive examples

Vehicle: Porsche.

Details: Porsche Exclusive.

A Porsche is more than just a car. It is also an expression of the personal freedom, taste and lifestyle of its driver.

Porsche Exclusive offers you a wide range of individual extras so you can personalize your car to your own unique requirements. Straight from the factory. Visual and technical enhancements, for both the interior and exterior. And always just as you want them.

The following pages will assist you in planning your Porsche. Consult with your Porsche dealer to create your Boxster, tailor-made to your exact requirements—down to the finest detail. Something unique with exquisite craftsmanship. Explore your options and be inspired.





unique

Boxster in Carrara White

**Pure as the driven
race-bred roadster.**

The sports car among roadsters. Only a bit more individual. Instrument dials in Carrara White, interior options painted in the exterior color. Rollover bar, wheels and mirror attachment-point finishers all painted in Carrara White.

Strong of will, and distinct in character. In short, unique.

Find out more about the various equipment details of the Boxster in Carrara White by contacting your authorized Porsche dealer.











Boxster





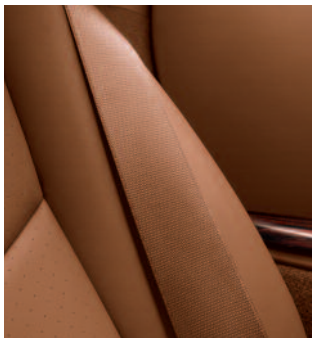
elegant

Boxster S in Macadamia Metallic

**Fine art meets
unadulterated fun.**

An unadulterated roadster, further enhanced and refined by a sport exhaust system with sport tailpipe. The elegant interior options in Makassar wood add finesse. The Porsche Doppelkupplung (PDK) selector gate-surround in Sand

Beige leather and complementary colored seat belts also in Sand Beige complete the masterpiece. To learn more about the equipment details of the Boxster S in Macadamia Metallic, contact your authorized Porsche dealer.













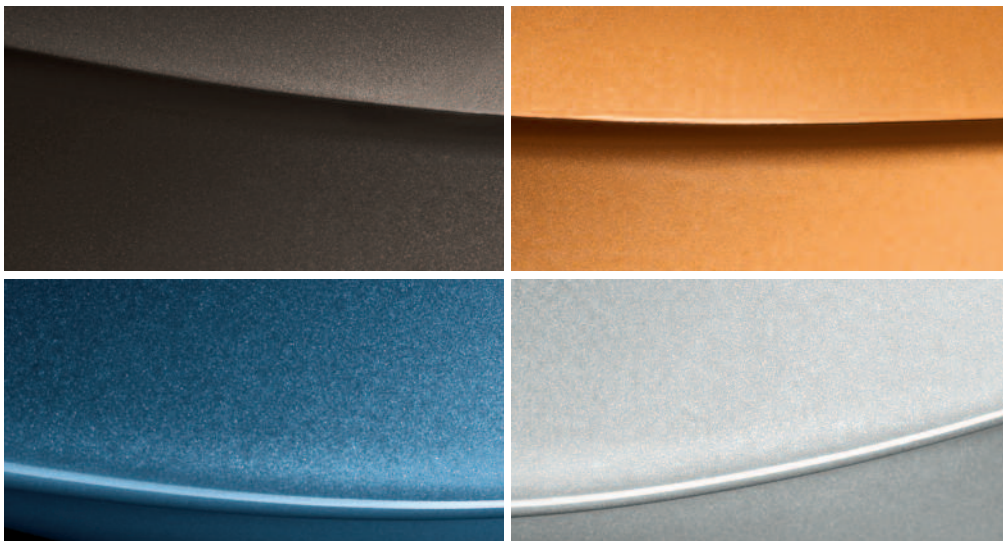
Colors and materials

**Exceptional, extravagant,
exquisite, excellent, exact.**

In a word: Exclusive.

We offer an exclusive range of colors and materials for you to choose from. Leather, fine-grained woods, Carbon Fiber, aluminum and stainless steel can be selected to enhance the interior.

Every component we use has been tested and approved, ensuring that your Porsche remains a Porsche, but one that embodies your personal style.



Selection of special/individual colors: Marrone Metallic, Nordic Gold Metallic, Azurro California Metallic, Polar Silver Metallic

Leather

Leather is a traditional natural material—a true classic. Items made of leather are both timeless and hard-wearing.



Alcantara®

This high-quality material is easy-care, washable and has a pleasant feel.



Makassar Wood

Makassar ebony is dark and distinctive with a modern, elegant look. The deep black heartwood has reddish-brown lines and a dramatic, marble-like texture.



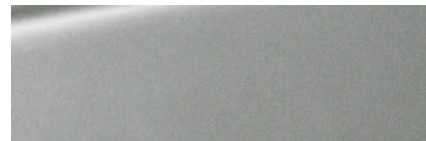
Carbon Fiber

Carbon Fiber is a light but highly durable material with motorsport origins. Its high-tech look gives a sporty feel to the interior.



Aluminum

Aluminum or Aluminum-Look is a cool, elegant material that also reflects a classic motorsport heritage.



Stainless Steel

High-quality alloyed steel is resistant to both heat and corrosion. A definitive, enduring material for a distinguished look.





Exterior package in matte Aluminum-Look, wing mirror casing in matte Aluminum-Look, mirror attachment-point finishers painted, side strips with model designation

Exclusive options

Exterior.

Option	Boxster	Boxster S	Code	Page
• Exterior package in matte Aluminum-Look	○	○	DAF	20
• Wing mirror casing in matte Aluminum-Look	○	○	CNW	20
• Rollover bar in Aluminum-Look	○	○	XCM	21
• Rear side air-intake grilles painted*	○	○	CAC	6
• Mirror attachment-point finishers painted*	○	○	CMA	6, 7, 13
• Rollover bar painted*	○	○	XMK	10, 11

– not available ○ extra-cost option • standard equipment



Headlight cleaning-system cover painted in exterior color



Roll-over bar in Aluminum-Look

Exterior.

Option	Boxster	Boxster S	Code	Page
• Headlight cleaning-system cover painted*	○	○	CGA	7, 21
• Side strips with model designation	○	○	CMX	12, 20
• Model designation on rear lid painted*	○	○	CUC	–

*Paint in exterior color.



Sport exhaust tailpipe



Short Shifter

Engine, transmission and chassis.

Option			Code	Page
	Boxster	Boxster S		
• Sport exhaust tailpipe	○	○	XLS	22
• Sport exhaust system	○	○	XLF	5, 16
• Short Shifter	○	○	XCZ	22

– not available ○ extra-cost option • standard equipment



19-inch Carrera Sport wheels



Wheels painted in different exterior color

Wheels.

Option			Code	Page
	Boxster	Boxster S		
• 19-inch Carrera Sport wheel*	o	o	XRR	23
• Wheels painted in exterior color	o	o	XD9	6, 10
• Wheels painted in different exterior color			CRX	
Black	o	o	XDA	–
Basalt Black Metallic	o	o	XDB	5, 23
Speed Yellow	o	o	XDC	–
Carrara White	o	o	XDD	–
Guards Red	o	o	XDE	–
• Wheel spacers on front and rear axle, 5mm	o	o	XRP	–

*Includes wheel center cap with full-color Porsche Crest.

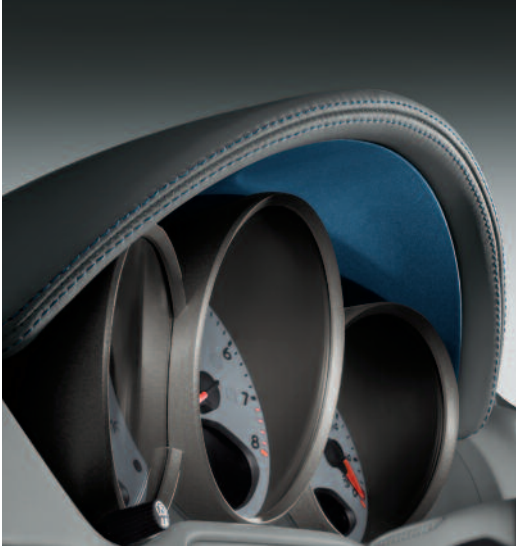


Door opener panel painted*

Interior.

Option			Code	Page
	Boxster	Boxster S		
• Door opener trim painted*	○	○	CET	8, 24, 26
• Door opener painted*	○	○	CMC	8, 26
• Instrument cluster-surround painted*	○	○	CDP	6, 25
• Switch-panel trim strip painted*	○	○	CDM	8, 26
• Air vents painted**	○	○	CKB	6, 8, 26
• Air vent slats painted*	○	○	CDN	25
• Decorative trim for gear lever painted*	○	○	CDJ	9
• PDK selector gate-surround painted*	○	○	XWS	–

– not available ○ extra-cost option • standard equipment



Instrument cluster-surround painted*



Air vent slats painted*

Interior.

Option			Code	Page
	Boxster	Boxster S		
• Instrument dials painted				
Sand Beige	o	o	XFD	–
Guards Red	o	o	XFG	–
Speed Yellow	o	o	XFH	–
Carrara White	o	o	XFJ	6, 26
• Sport Chrono stop-clock dial face				
Sand Beige	o	o	CGD	–
Guards Red	o	o	CGG	–
Speed Yellow	o	o	CGH	–
Carrara White	o	o	CGJ	–

* Paint in exterior color. This option is also available in black paint, independent of the exterior color.

** Paint in exterior color.



Padded three-spoke sports steering wheel in Smooth-Finish Leather, painted door opener trim, door opener, air vents and switch-panel trim strip

Interior.

Option			Code	Page
	Boxster	Boxster S		
• Rear center console painted**	○	○	XME	9
• Sport Seat backs painted **	○	○	XSA	10, 11
• Seat belts				
Silver Grey	○	○	XSH	–
Sand Beige	○	○	XST	12
Guards Red	○	○	XSX	–
Speed Yellow	○	○	XSY	–
• PCM package painted*	○	○	CUF	–
• Door storage-compartment lighting	○	○	CEF	–

– not available ○ extra-cost option • standard equipment



Three-spoke steering wheel in Smooth-Finish Leather, padded with Y-shaped trim in leather



Extended trim package door opener trim in leather

Interior: leather and natural leather.

Option	Boxster	Boxster S	Code	Page
• Interior leather package	○	○	EBF	28
• Instrument cluster-surround in leather	○	○	CWW	–
• Three-spoke sports steering wheel in Smooth-Finish Leather, padded	○	○	XPA	8, 26
• Three-spoke multifunction steering wheel in Smooth-Finish Leather, padded	○	○	CPA	–
• Three-spoke multifunction steering wheel Y-shaped trim in leather	○	○	CDW	–

* Paint in exterior color. This option is also available in black paint, independent of the exterior color.

** Paint in exterior color.



Dashboard end trim in leather from the interior package A-pillar in leather



Windshield defroster panel and defroster vents in leather, windshield surround trim in leather

Interior: leather and natural leather.

Option			Code	Page
	Boxster	Boxster S		
• Steering column in leather	○	○	XNS	8, 14
• Windshield defroster panel in leather	○	○	XV1	28
• Windshield defroster vents in leather	○	○	CNB	28
• Interior package A-pillar in leather	○	○	DAA	28
• Sun visors in leather	○	○	XMR	14
• Sun visors in two-tone leather	○	○	CW	–

– not available ○ extra-cost option • standard equipment

28 | Exclusive options



Gear lever trim in leather



PDK selector gate-surround in leather

Interior: leather and natural leather.

Option	Boxster	Boxster S	Code	Page
• Interior mirror in leather	○	○	CVW	–
• Windshield surround trim in leather	○	○	CUT	28
• Switch-panel decorative trim in leather	○	○	CVP	–
• PCM package in leather	○	○	CUR	14
• Gear lever trim in leather	○	○	CDZ	29
• PDK selector gate-surround in leather	○	○	XWU	29



Rear center console in leather, storage-compartment cover with Porsche Crest



Storage-compartment cover with Boxster S logo, seat-belt buckles in leather

Interior: leather and natural leather.

Option			Code	Page
	Boxster	Boxster S		
• Rear center console in leather	◦	◦	XMZ	30
• Storage-compartment cover with Porsche Crest	◦	◦	CPT	30
• Storage-compartment cover with Boxster S logo	–	◦	CUV	17, 30
• Clothes hooks on seat backrests in leather	◦	◦	CVY	10, 11
• Porsche Crest embossed on headrests	◦	◦	XSC	–

– not available ◦ extra-cost option • standard equipment



Inner door-entry guards in leather



Floor mats with leather surround

Interior: leather and natural leather.

Option			Code	Page
	Boxster	Boxster S		
• Seat-belt buckles in leather	o	o	CDT	17, 30
• Fuse box cover in leather	o	o	CUJ	37
• Inner door-entry guards in leather	o	o	CTG	31
• Floor mats with leather surround	o	o	CJX	31
• Key pouch in leather	o	o	CPU	–



Interior: Alcantara®

Interior: Alcantara.®

Option			Code	Page
	Boxster	Boxster S		
• Door trim package in Alcantara®	○	○	CLF	32
• Steering wheel in Alcantara®	○	○	CLA	32
• Switch-panel trim strip in Alcantara®	○	○	CLE	32
• Gear/handbrake levers in Alcantara®	○	○	DAT	32
• PDK selector/handbrake lever in Alcantara®	○	○	DAP	–
• Storage-compartment cover in Alcantara® with Porsche logo	○	○	CLG	32

– not available ○ extra-cost option • standard equipment



Interior: Makassar wood

Interior: Makassar wood, Carbon Fiber, Aluminum-Look.

Option			Code	Page
	Boxster	Boxster S		
• Door finishers				
Makassar wood	o	o	XTT	14, 33
Carbon Fiber	o	o	XTL	34
Aluminum-Look	o	o	EBJ	34
• Rear center console				
Makassar wood	o	o	XJT	17, 33
Carbon Fiber	o	o	XMJ	34
Aluminum-Look	o	o	XCK	34



Interior: Carbon Fiber



Interior: Aluminum-Look

– not available ◦ extra-cost option • standard equipment



Instrument cluster-surround in Aluminum-Look, three-spoke multifunction steering wheel for PDK in Aluminum-Look, switch-panel trim strip and air vent slats in Aluminum-Look

Interior: Aluminum-Look/stainless steel.

Option			Code	Page
	Boxster	Boxster S		
• Instrument cluster-surround in Aluminum-Look	○	○	CWW	34, 35
• Three-spoke multifunction steering wheel in Aluminum-Look	○	○	XPV	–
• Three-spoke multifunction steering wheel for PDK in Aluminum-Look	○	○	XPU	34, 35
• Three-spoke multifunction steering wheel Y-shaped trim in Aluminum-Look	○	○	CDD	–
• Air vent slats in Aluminum-Look	○	○	CDA	34, 35
• Switch-panel trim strip in Aluminum-Look	○	●	CDE	34, 35



Gear/handbrake levers in Aluminum I

Interior: Aluminum-Look/stainless steel.

Option			Code	Page
	Boxster	Boxster S		
• Gear/handbrake levers in Aluminum I	○	○	ECA	36
• Gear/handbrake levers in Aluminum I (leather in color to sample)	○	○	DAX	–
• Gear/handbrake levers in Aluminum II	○	○	ECC	8
• Gear/handbrake levers in Aluminum II (leather in color to sample)	○	○	DAW	–
• PDK selector/handbrake levers in Aluminum	○	○	ECB	34, 37
• Handbrake lever in Aluminum II	○	○	XFP	–
• PDK selector/handbrake levers (leather in color to sample)	○	○	DAZ	–
• Handbrake lever in Aluminum II with stitching in deviating color	○	○	CFP	–

– not available ○ extra-cost option • standard equipment



Gear lever trim in Aluminum-Look,
PDK selector in Aluminum



Fuse box cover in leather, sports-style footrest

Interior: Aluminum-Look/stainless steel.

Option	Boxster	Boxster S	Code	Page
	○	●		
• Gear lever trim in Aluminum-Look	○	●	CDF	37
• PCM package in Aluminum-Look	○	○	CCP	–
• PDK selector gate-surround in Aluminum-Look	○	○	XWR	–
• Sports-style footrest	○	○	XXZ	37



Door-entry guards in stainless steel

Door-entry guards.

Option	Boxster	Boxster S	Code	Page
• Door-entry guards in Carbon Fiber	○	○	X69	39
• Door-entry guards in Carbon Fiber, illuminated	○	○	CXD	39
• Door-entry guards in stainless steel	○	○	X70	38
• Door-entry guards in stainless steel, illuminated	○	○	CXB	–

– not available ○ extra-cost option • standard equipment



Door-entry guards in Carbon Fiber



Door-entry guards in Carbon Fiber, illuminated

Designing your Porsche

How do we build the perfect Porsche?

We'll leave that up to you.

Those who build a Porsche share something in common with those who purchase one: an opportunity to create the automobile of their dreams. A Porsche is a unique breed, designed by inquisitive minds at Weissach in response to one incessant question: "How can we make it perfect?"

Ultimately, it's a question each owner must answer. Which is why Porsche Exclusive offers such a wide variety of options for celebrating the pure joy of driving with a heightened sense of style and luxury. It's an experience for which there is, quite literally, no substitute.

For more information on our entire range of Exclusive options, pricing and delivery timetables, please contact your authorized Porsche dealer and ask to speak

with a sales consultant. The possibilities are limited only by your imagination—and are covered by your standard vehicle warranty.

A philosophy of relentless improvement has driven every Porsche for more than a half century. With Porsche Exclusive, the process of improvement has never been easier. Or more rewarding.





Porsche Financial Services

Competitive, convenient and carefully crafted financing options can be customized to meet your needs. Ask your certified Porsche Sales Consultant for details.



Porsche Approved Pre-Owned

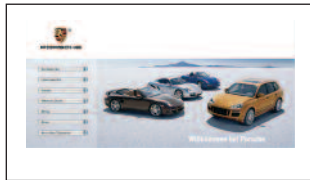
Only the best Porsche cars earn the right to be called "Certified." A meticulous 111-point inspection, a 2-year or 50,000-mile Limited Warranty, and 24-hour Roadside Assistance make this program one of a kind. Contact your Porsche dealer for details.



Porsche Equipment

Personalize your Porsche at any time after purchase with the Equipment range of approved accessories. Designed exclusively for your Porsche, every product is fully guaranteed.

Service



Porsche Online

For all the latest news and information from Porsche, go to www.porscheusa.com.

Porsche Design Driver's Selection

Our distinctive collection of clothing and accessories combines timeless elegance with unmistakable quality. Visit your local Porsche dealer or shop online at porsche.com/shop.

Porsche Clubs

With more than 120,000 members worldwide in 60 countries, know you are not alone in your passion for Porsche. Learn more about the brand and meet other Porsche enthusiasts just like yourself. Visit porsche.com for more information.

Porsche Sport Driving School

Develop your skill and explore your Porsche with the Porsche Sport Driving School. Learn first-hand from famed Porsche Racing drivers while they teach you at a world-class racing facility. Visit porschedriving.com for more information.

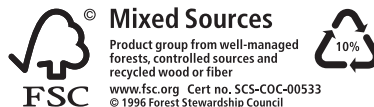


Ask your Porsche dealer for the latest brochures from Porsche Exclusive, Porsche Equipment and Porsche Design Driver's Selection.





Porsche Cars North America, Inc.
980 Hammond Drive, Suite 1000
Atlanta, Georgia 30328



Dr. Ing. h.c. F. Porsche AG is the owner of numerous trademarks, both registered and unregistered, including without limitation the Porsche Crest®, Porsche®, Boxster®, Carrera®, Cayenne®, Cayman™, Panamera®, Tiptronic®, VarioCam®, PCM®, 911®, 4S®, FOUR, UNCOMPROMISEDSM and the model numbers and distinctive shapes of the Porsche automobiles, such as the federally registered 911 and Boxster automobiles. The third-party trademarks contained herein are the properties of their respective owners. Specifications, performance standards, standard equipment, options, and other elements shown are subject to change without notice. Some options may be unavailable when a car is built. Some vehicles may be shown with non-U.S. equipment. Please ask your dealer for advice concerning the current availability of options and verify the optional equipment that you ordered. Porsche recommends seat-belt usage and observance of traffic laws at all times.